

HOLY TRINITY CHURCH

EASTON ROYAL, WILTSHIRE SN9 5LZ

Trail for children (of all ages!)


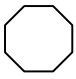
YOUR NAME

Start the trail at the grey arrow going into the North Porch.
Follow the numbers from 1-16.

1 THE FONT

Find the font. Mark it with an **F** on your plan.

How many sides does it have?

Is it a hexagon  or an octagon? 

(Tick the correct shape)

What is put into the font when someone is made a member of the church? **W** _ _ _ _

8 THE PULPIT AND LECTERN

Find the pulpit marked **P** on your plan.

Why do you think it is high up?

Find the lectern (*clue – a wooden book stand*).

What is the special Christian book that may be on the pulpit or the lectern?

2 THE NAVE

Stand in the nave, marked on your plan.

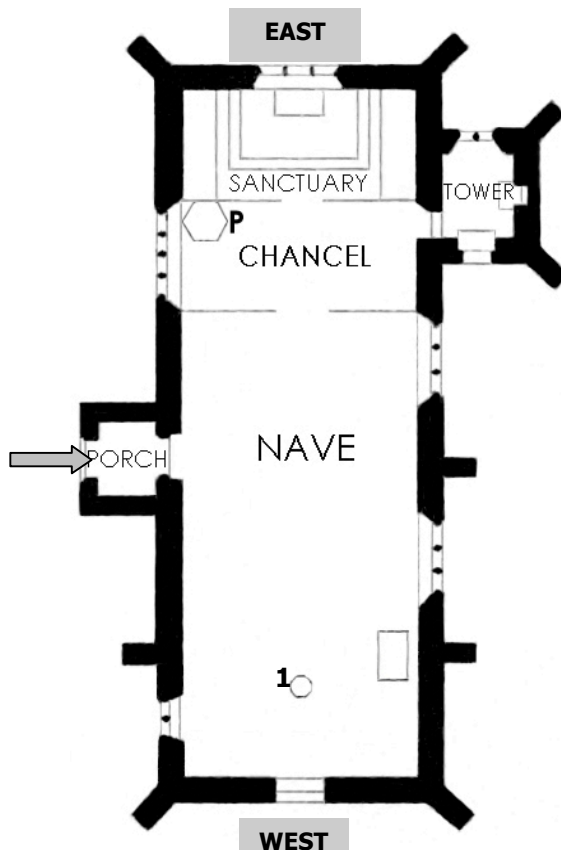
Look at the roof, what does the shape, remind you of?
(*clue – Navis is Latin for ship*)

3 THE BENCHES

Count the benches.

How many people do you think could sit in the church?

Look for a name on a brass plaque on a bench.
Who sat here?



7 THE EAST WINDOW



Find this picture in the window.

Do you know the Bible story? Yes/No

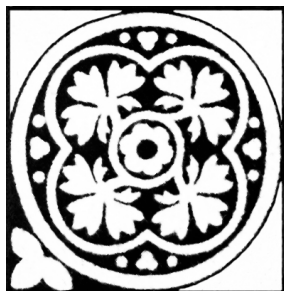
Look for 4 letters on the window. Fill in the ones that are missing.

I ... R ...

4 THE SANCTUARY

Find the Sanctuary marked on your plan. How is the Sanctuary separated from the Chancel/Nave?

Complete the pattern of the floor tile.



5 THE ALTAR

Find the Altar; it is like a special table.

Mark it with **A** on your plan.

What is on the Altar?

What colour cloth is on the front of the Altar?

6 GLASTONBURY CHAIR

In the Sanctuary find a chair held together by pegs. Mark it on the plan with a **G**.



How many pegs are there?

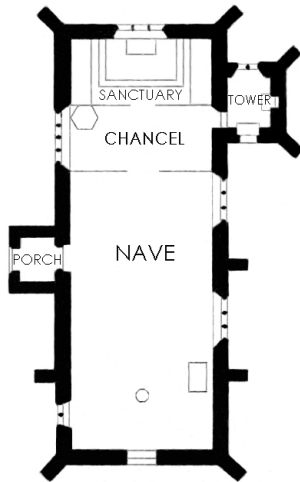


9 THE NORTH WINDOW

Look at the north window beside the pulpit.

Draw lines to match the animals to the Saints.

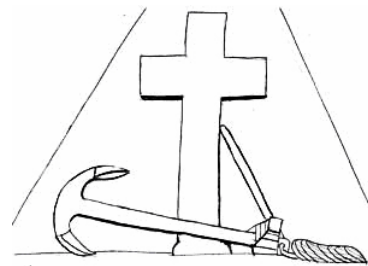
- | | |
|---------|-------|
| Mark | Ox |
| John | Lion |
| Luke | Wings |
| Matthew | Eagle |



10 LLEWELLYN TABLET

How did David Llewellyn die and when?

Find the cannon balls and snake and add them to this picture.

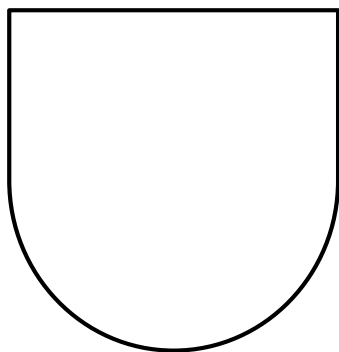


11 THE SAVERNAKE TABLET

Find the Memorial Tablet with a horn.

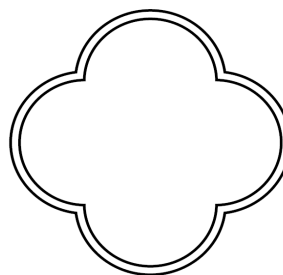
There are two important family names on the tablet – Esturmy and Seymour. Their coats of arms are at the top.

Draw one you like here.



12 SOUTH WINDOWS

Find the sacred letters IHS and XPC, which are short ways of writing Jesus and Christ in Greek. Draw a design here using your initials.



13 THE MEMORIALS

Find the dates written on the two War Memorials.

Which surname name appears three times?

Name the flower that many people wear in November to remember those who have died in wars.



14 THE ORGAN

Find the organ and mark it "O" on your plan.

How many painted pipes can you see?

The musical sound depends on the size of the pipes. Which pipes make the high notes?

Long pipes..... Short pipes.....

15 THE KNEELERS

Look at the kneelers.

Write four designs which you can see on the kneelers.

- | | |
|---|---|
| 1 | 2 |
| 3 | 4 |

16 YOUR THOUGHTS

Finally, people have been worshipping here for nearly a thousand years. Sit quietly for a moment in this special place and think of what you have seen.

Well done you have finished the trail.

We hope you have enjoyed your visit to Holy Trinity Church. Please come back and see us again!